

# Radford Mill



Objektnamn	Radford Mill
Kund	City & Country Property Management
Byggår	2018
Fönstermodell	Royal
Plats/Län	Storbritannien
Ort	Nottingham
Adress	Norton St
Typ	Renovering
Antal produkter	172
Objektnamn	Radford Mill
Kund	City & Country Property Management
Byggår	2018
Fönstermodell	Royal
Plats/Län	Storbritannien
Ort	Nottingham
Adress	Norton St
Typ	Renovering
Antal produkter	172

# Radford Mill

## Radford Mill Nottingham

Radford Mill was built at the turn of last century and at one stage was used to make Spitfire engines. This large block has remained substantially unoccupied for many years. With Mabec's help, the aim is to retain the mill as a centre piece to a residential "village" on this 1.5 acre site.

Planning consent for a redevelopment providing some 450 bed spaces, distributed across a range of different unit type; from studios to apartments and house has recently been obtained. On the ground floors is proposed communal facility including break-out and gym facilities for residents use, with parking and bike storage in the basement areas.

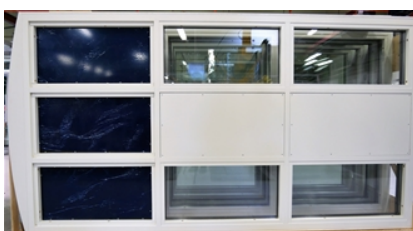
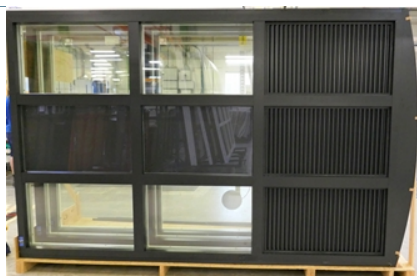
Work has recently started on what will be a new concept for the City of Nottingham to be opened during the Autumn of 2019.

*source: mabecproperty.co.uk*

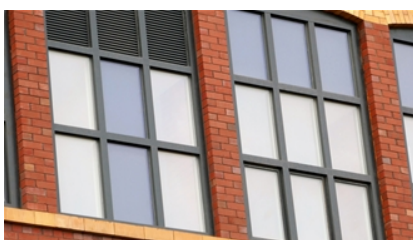
## Referensbilder



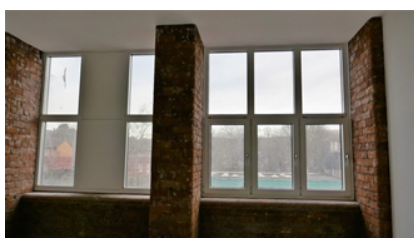
# Radford Mill



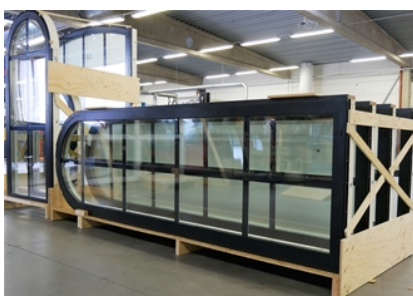
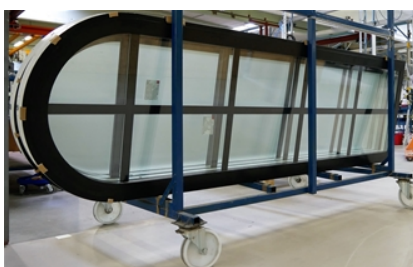
# Radford Mill



# Radford Mill



# Radford Mill



# Radford Mill



# Radford Mill



## Karta

